

The GeoPlatform provides shared and trusted geospatial data, services, and applications for use by the public and by government agencies and partners to meet their mission needs.

GeoPlatform users have access to:

- A one-stop shop that delivers trusted, consistent data and services
- Authoritative data to support informed decision making
- Problem-solving applications and services built once and used many times across Federal and other organizations
- A shared infrastructure that can host your data and applications
- A national and Federal focal point where governmental, academic, private, and public data can be visualized together to inform national and regional issues

The Geospatial Platform (<https://www.geoplatform.gov>) is a cross-agency collaborative effort and Shared Service that embodies the principles and spirit of Open Government, emphasizing government-to-citizen communication, accountability, and transparency.

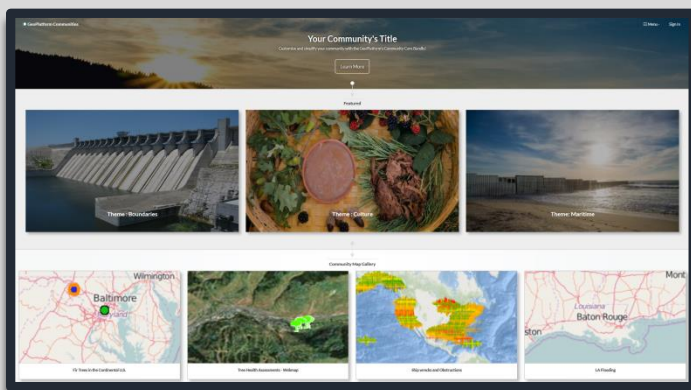
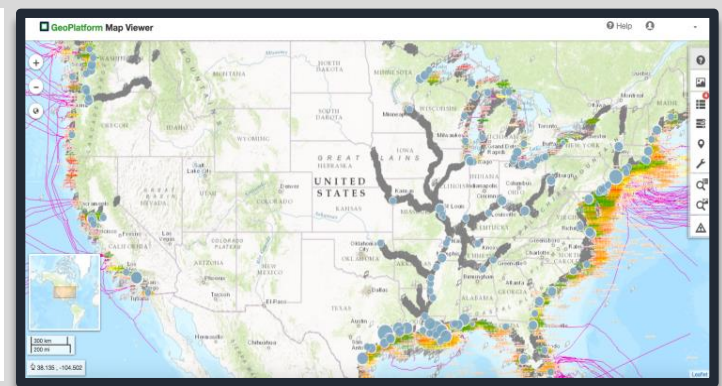
GeoPlatform.gov was created to enhance geospatial resource sharing across the U.S. Government and the world, and to allow users like you to participate in an online geospatial services experience.

Whether you want to discover and use up-to-date National Geospatial Data Assets (NGDAs), make a shared gallery of maps for your website, integrate quality National data into your web applications, or more, GeoPlatform.gov is a place to stay connected to a fast-evolving geospatial service ecosystem.

Use Open Layers to Curate Customized Open Maps and Map Galleries!

The **Map Viewer** is a great place to discover, create, and share data.

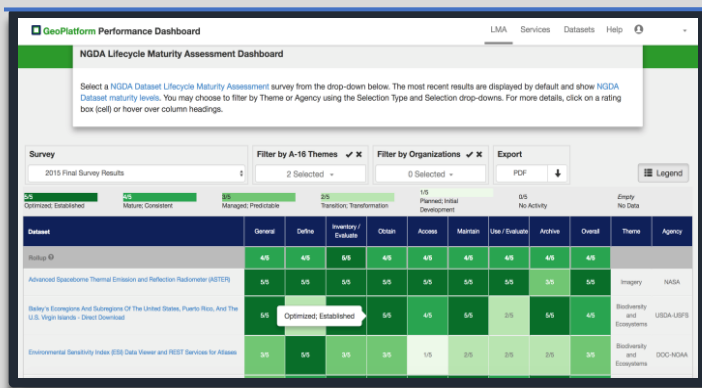
- Search through thousands of layers from online web services.
- Enhance maps by customizing layer visibility, layer order, and creating or uploading vector features.
- Create Galleries using your own maps, maps by other users, and maps published in ArcGIS Online.



Share a Community Workspace to Collaborate on Projects!

With **Community Spaces**, inform and collaborate on policy initiatives and topical or event-based issues of national and regional significance.

- Host secure content, applications and services.
- Self-served administration and curation of content and messaging.
- Use a rich set of customizations for creating and sharing dynamic content and active user-experiences.



View Performance of Geospatial Datasets and Services!

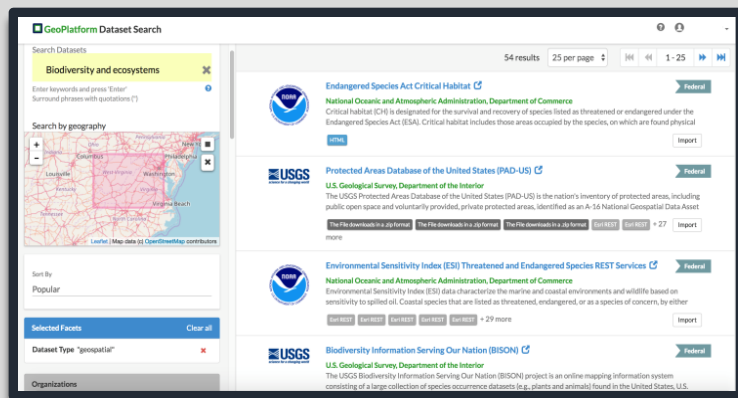
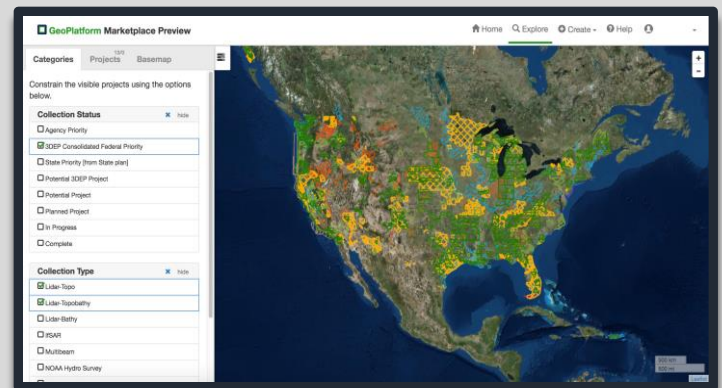
Use the **Performance Dashboard** to search through the thousands of datasets and services hosted by the GeoPlatform.

- See the Lifecycle Maturity of the A-16 National Geospatial Data Assets.
- Find the NGDA Datasets that have been “service enabled.”
- Quickly see the performance and reliability of online services.

Reduce Costs by Partnering on Data Acquisitions!

With **Marketplace**, share information about planned and active GeoData collection projects with data producers and consumers.

- Foster partnerships among organizations looking to procure or create data of common interest.
- Share a system for planning and coordinating partnerships with Federal and non-federal organizations, tracking all types of mapping data acquisition initiatives.



Quickly Search for Geospatial Data!

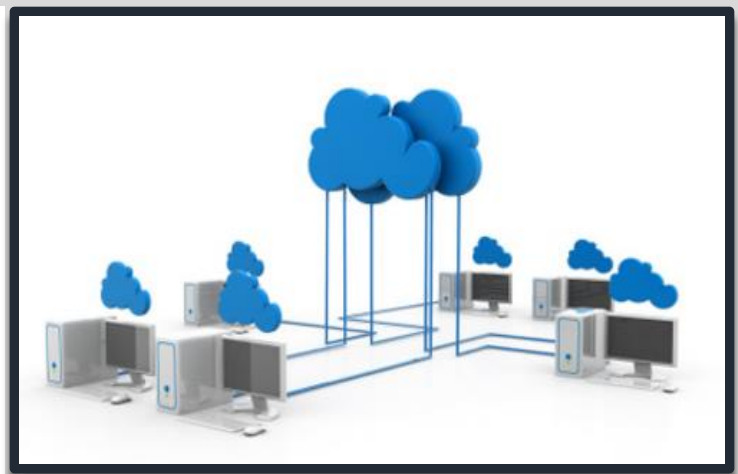
With **Dataset Search**, search through thousands of open Geospatial datasets listed on data.gov to find what you need.

- Narrow search results by using keywords, filtering a variety of different subjects, or specifying the location on a map.
- Create customized searches to embed in online content and share in emails with colleagues.
- Import metadata about dataset resources to augment and link with other shared resources.

Host Your Data and Services in the Cloud!

Host GIS applications, data and services in the Secure Amazon Web Service enclave in the cloud.

- Choose from hardened ESRI and OpenGEO stacks.
- Operating system level management on all public facing services.
- Flexible storage space and computing available to accommodate increased use during events.
- All AWS FedRAMP services available at FISMA Moderate.
- 5 Year FISMA Moderate ATO as of 16 January 2018
- CloudCheckr offers a single pane view to help modern enterprises manage and optimize their public cloud and quickly optimize spend, eliminate waste, and improve security and compliance.



Contact us by email at the GeoPlatform Service Desk (servicedesk@geoplatform.gov) or directly through these liaisons:

Tod Dabolt
 Geospatial Information Officer
 ITMD/ CIO/ OS/ DOI
 Office Phone: 202-208-4109
 E-mail: thomas_dabolt@ios.doi.gov

Kenneth Shaffer
 Deputy Executive Director
 FGDC/ USGS/ DOI
 Office Phone: 703-648-5740
 E-mail: kmshaffer@usgs.gov